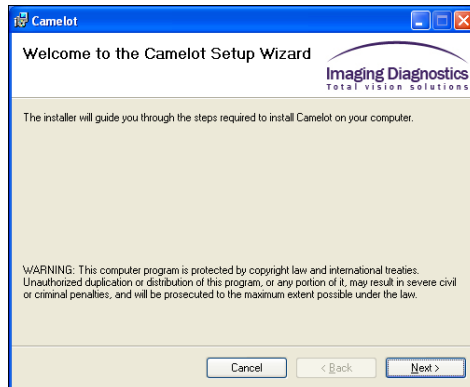


Installing the EVK Software and Drivers

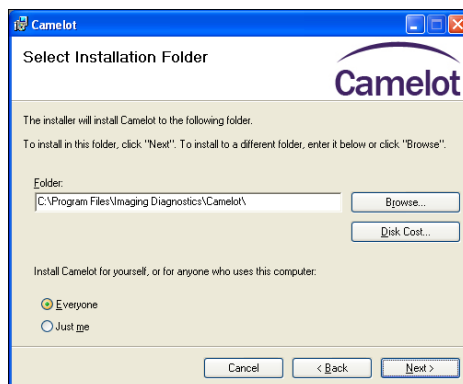
The **Camelot** and **IDM** series' software applications, camera drivers and camera installation are found on *Imaging Diagnostic's* site, www.imagine2d.com, in the Support tab under **Downloads**.

◆ **To install the Camelot software and Camera:**

1. **DO NOT** connect the camera to the PC at this time.
2. After downloading **Current Software Version**, and extracting the zip file, run **CamelotSetup.exe** from the **Camelot setup** folder.



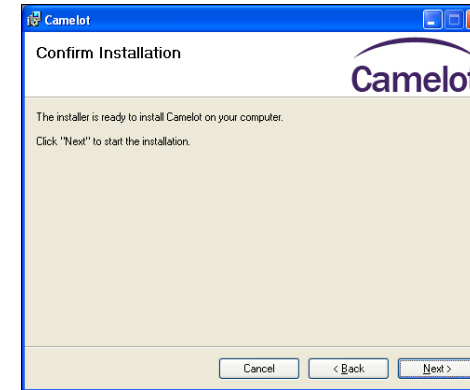
3. Click the **Next >** button.



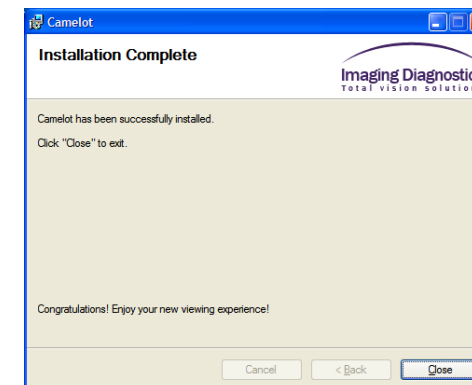
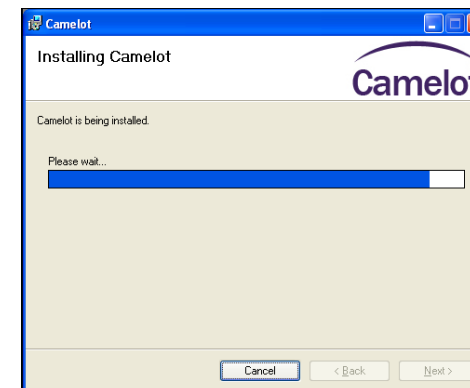
4. The default installation folder is shown. Change the installation folder if required (not recommended).

Select **Just me** if you want to restrict access to you alone.

5. Click the **Next >** button.



6. Click the **Next >** button to confirm the installation.



7. Click the **Close** button.

8. Connect the camera to a USB 2.0 port on the computer.

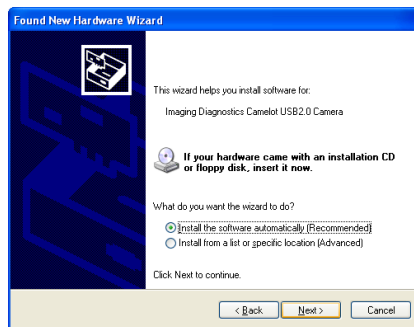
The following screen shots are from a Windows XP computer.

For **Windows 7**, installation is done via the Device Manager – see below, step 18.



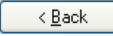
9. Select **No, not this time**.

10. Click the  button.




11. Select **Install the software automatically (Recommended)**.

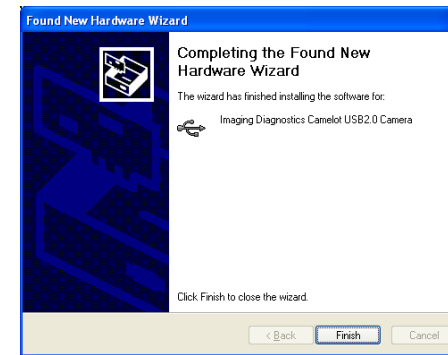
12. **If the driver is not found and the installation stops**, continue to the next step, otherwise skip to step 17.

13. Click the  button to return to the previous screen.

14. Now select, **Install from a list or specific location (Advanced)**.

15. Use the  button to navigate to the driver folder: **X:\Program Files\Imaging Diagnostics\Camelot\Drivers** (where X: is the root directory). If a different folder was chosen in step 4 – then browse to it.

16. Click the  button.

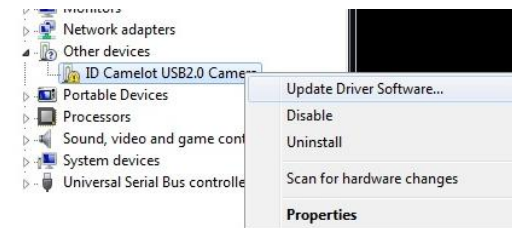


17. Click the  button.

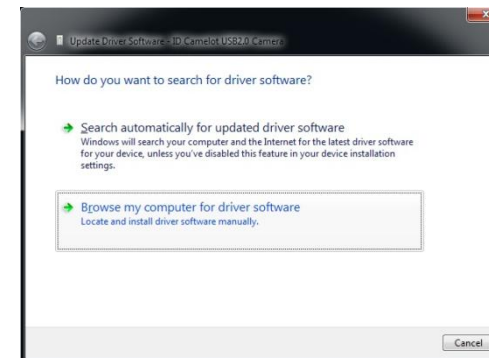
18. For **Windows 7** – after installing the drivers plug in the camera. The following may appear:



19. Open the Device manager (right-click on Computer, choose Properties, and then choose Device Manager from list). Find the Other Devices, and right-click on **ID Camelot USB2.0 Camera**



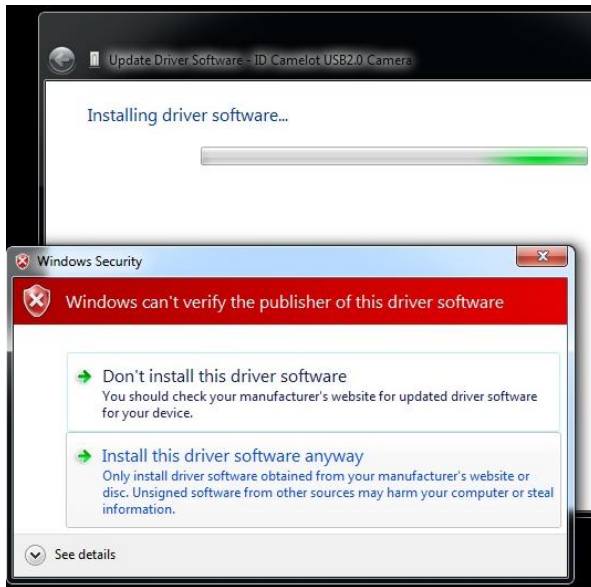
20. Choose Update Driver Software from the menu. Then choose the Browse my computer option.



21. Browse to **X:\Program Files\Imaging Diagnostics\Camelot\Drivers** where: **X** is the system drive. If the folder was changed in step 4, please browse to folder chosen for installation. Click on Next.



22. Choose the "Install this driver software anyway" option.



After installing the Camelot/IDM camera, check that it can now be seen in the **Device Manager**:



Installing DirectShow (Optional)

◆ To install DirectShow (optional):

In order to use the DirectShow version of the CamelotView software, the DirectX redistributable (version 9.0 and higher) must be installed. When running Windows 7 by default the DirectX version is higher, version 11, and no action is required. To check the DirectX version on your PC go to Start → Run → and type DXDIAG. The minimum requirement for Windows XP is DirectX version 9.0c (4.09.0000.0904). The minimum requirement for Windows 7 is DirectX version 11.0.